



2022 ANNUAL REPORT

REACHING NEW HEIGHTS THROUGH COMMUNITY PARTNERSHIPS

TABLE OF CONTENTS

3	LETTER TO THE COMMUNITY	16	2022 SCHOLARSHIP WINNERS
4	2022 COMMITTEES, STAFF, AND SERVICES	20	2022 DONORS AND TRIBUTES
6	2022 YEAR IN REVIEW / NEWS	22	WOMEN'S GIVING CIRCLE
7	STATEMENT OF ACTIVITIES		
8	MCCF FUNDS / NEW FUNDS		
10	NEW PARTNERSHIP		
12	2022 GRANTS AWARDED		
14	NEW SCHOLARSHIPS		



Domtar

*MCCF extends its gratitude to
DOMTAR'S JOHNSONBURG MILL
for their generous contribution
to our annual report!*

1865 Wealth Advisors at CNB Bank
is proud to support the
McKean County Community Foundation.

— 1 8 6 5 —
WEALTH ADVISORS

AT CNB BANK

McKean County Offices
12 Chambers Street, Bradford
87 Fraley Street, Kane

www.1865WealthAdvisors.com

NOT FDIC INSURED | NOT BANK GUARANTEED | MAY LOSE VALUE | NOT GUARANTEED BY ANY FEDERAL GOVERNMENT AGENCY | NOT A BANK DEPOSIT

LETTER TO THE COMMUNITY

Dear Friends,

Warm greetings to each of our donors and partners of our vibrant community! As we reflect on the remarkable journey we've taken together over the past year, it brings us great pleasure to present our annual report for 2022. This report not only **celebrates our accomplishments** but also **recognizes the incredible partnerships and collaborations** that have **strengthened our shared vision** of a thriving community.

At the McKean County Community Foundation, we firmly believe in the **power of collaboration** and the potential it holds to effect meaningful change. Throughout 2022, we have witnessed firsthand the **extraordinary results that arise when diverse entities join forces** to tackle our community's most pressing challenges.

We are grateful for the unwavering support of our community organizations, donors, and especially our McKean County Commissioners, who partnered with us to distribute the American Rescue Plan Act (ARPA) funds to our local nonprofits. By pooling our collective expertise and resources, we were able to ensure the efficient allocation of these vital dollars. We **successfully disbursed \$250,000 of ARPA funds to a diverse range of nonprofits** that serve various sectors of our community. By supporting organizations that address critical needs such as healthcare, education, housing, food security, and social services, we have **empowered our grantees to continue their invaluable work and positively impact the lives of countless individuals**. Together, we recognized the immense impact of these funds on our community.

We extend our **deepest gratitude to all our generous donors**, whose unwavering support and philanthropic spirit have been the lifeblood of our foundation and our community. Their trust in us is a testament to the profound impact we can collectively make when we unite behind a common cause.

As we look to the future, we remain committed to **fostering even stronger partnerships, amplifying our impact, and inspiring positive change**. Together, we will continue to **build a community where every individual has the opportunity to thrive**, regardless of their background or circumstances. We are truly honored to serve as the bridge between those who have the desire to make a difference and those who need it most.

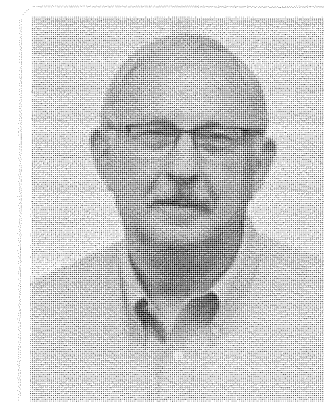
With sincere gratitude,

Robert Esch

Bob Esch
Board President

Paula Fritz Eddy

Paula Fritz Eddy
Executive Director



BOB ESCH



PAULA FRITZ EDDY

2022 COMMITTEES, STAFF & SERVICES

Representatives to the Community Foundation of the Northern Alleghenies (CFNA)

Elk
Gennaro Aiello
Bill Conrad
Tom Jesberger
Bob Ordiway
Tom Wagner

Staff

Paula Fritz Eddy -
Executive Director
Jeanne Dippold -
Finance Director
Kris Kronenwetter -
Scholarship Manager
Ann Bauer -
Marketing Manager
Molly Cerroni -
Executive Assistant
Juliana Silveri -
Executive Assistant
Stephen Bobby -
Summer Intern

CFNA Investment &
Finance Committee
CFNA Board

CFNA Foundation Scholarship Committee

Linda Buchheit
(Elk/community)
Judy Allegretto (Elk)
Roni Swanson (McKean)
Bill Shuey (Elk)
Denny Bonanno (Elk)

Public Relations Committee

Nancy Hoffman
Ann Bauer
Paula Fritz Eddy
Tom Jesberger
Bea Terbovich
Eric Wolfe

McKean County Commissioners Grants Committee

Bob Esch
Jim Evans
Ann Robinson
Dan Wertz
Roni Swanson
Judy Bodamer
Sarah Lonzi

Joe DeMott Port Allegany Fund

Dotty Anderson
Joe Lashway
Mark Errick
Andrew Johnson
Leslie Kallenborn

Women's Giving Circle

Judy Bodamer
Carol Duffy
Angela Erway
Roni Swanson
Sally Claypool
Ricci Jeanerette
Kathy Gibson
Linda Myers

Investment Managers

1865 Wealth Advisors
at CNB Bank
Gunter: Financial Group
of Raymond James

Guyasuta Investment Advisors
Janney Montgomery Scott LLC
PNC Institutional Investments
Northwest
Stifel: O'Leary Piccolo Launer &
Fledderman Wealth
Management Group
Vanguard Group

Photography Credits

ANF Visitors Bureau (cover photo)
Elk Co. Community Foundation
The Daily Press

Design and Printing

Something More Designs
Printing Plus+

WE EXTEND OUR HEARTFELT APPRECIATION TO OUR OUTGOING BOARD MEMBER!



DAVID KRANTZ

David Krantz served on the McKean County Community Foundation Board of Directors since its inception in 2017. During his tenure, David generously gave his time and resources to help MCCF experience enormous growth in its beginning years. Thank you, David, for being a valued board member and contributing to the success of our organization.

MCCF BOARD MEMBERS: OUR PARTNERS IN GOVERNANCE

*As the governing body of
our organization, our Board
of Directors works hard to
ensure the success of our
Foundation. It is an honor
to work with these
dedicated board members
who take on their duties
with dedication, wisdom,
and a vision for the future
of our organization.*

BOARD OF DIRECTORS

Robert C. Esch, President
Richard T. Esch, Treasurer
Sara Eddy Furlong, Secretary
Tim Asinger
Judy Bodamer
Josh Costa
James Evans
Lori Freer
Andrew Johnson
David Krantz
Sarah Lonzi
Veronica (Roni) Swanson



**Celebrating 25 years as American Refining
Group Inc. in 2022, the Bradford refinery
has been an economic engine in McKean
County since its establishment in 1881.**

**With a philanthropic spirit
that is cultivated corporately
and encouraged in its
employees, ARG focuses its
charitable giving on
education, economic
development, human
services and health care.**

**ARG is proud to support
the McKean County
Community Foundation!**



STIFEL | O'Leary Piccolo Launer & Fledderman Wealth Management Group

Robert W. O'Leary, AIF®, AAMS™, CRPC™
Resident Manager, Managing Director/Investments

John D. Piccolo, AIF®, PhD
Senior Vice President/Investments

Thomas S. Launer, AWMA™
Financial Advisor

Thomas A. Fledderman
Financial Advisor

Luke A. Hoffman, CFP®
Portfolio Analyst

Sherrie L. Ferragine
Client Relationship Manager

Liz Baldwin
Senior Registered
Client Service Associate

Cathy L. Renwick
Client Service Associate

Kindred L. Burdick
Client Service Associate



Scan to visit our website: www.olearywmg.com
(814) 788-5260 | 357 Bruxelles Street | St. Marys, Pennsylvania 15857

Stifel, Nicolaus & Company, Incorporated | Member SIPC & NYSE | www.stifel.com

2022: YEAR IN REVIEW

\$17.3M IN TOTAL
CFNA ASSETS*

In 2022, CFNA surpassed a milestone of granting over a million dollars in one year - \$1.56 million was distributed in nonprofit grants and student scholarships.

IN MCKEAN COUNTY ...

10

NEW FUNDS
CREATED

... bringing the total
number of funds to 63.

60

SCHOLARSHIPS
AWARDED

... totaling approximately \$429,664.

67

GRANTS
AWARDED

\$1.7
MILLION

RECEIVED

... for scholarships and grant
making, bringing the total to
\$2.34 million administered.

*The Community Foundation of the Northern Alleghenies (CFNA) is made up of two affiliates: The Elk County Community Foundation, which was established in 2000, and the McKean County Community Foundation, which was established in 2017. Both Community Foundations, through donations from the general public, make grants to community organizations in their respective counties for education, arts, health services, human services, civic services and economic development.

MCCF NEWS

FOUNDANT TECHNOLOGY ONLINE SCHOLARSHIP PORTAL DEBUTS IN 2022 The new Foundant Technologies scholarship portal went live in January 2022. Nearly 2,000 applications from graduating seniors and non-traditional students in McKean and Elk counties and beyond were completed and submitted online! This new online program utilized an eligibility quiz that automatically connected students to all the scholarships for which they were eligible to apply, offering more opportunities than ever before. At the end of the 2022 scholarship year, \$331,114 was awarded to 263 students in McKean and Elk counties.

NEW ACCOUNTING SOFTWARE PROGRAM FROM FOUNDANT TECHNOLOGY CommunitySuite is a fund-based accounting and donor relationship management system by Foundant Technology that provides a holistic view of financials, donors, events, and giving. This fund accounting software program is designed for philanthropic organizations and was integrated into our finance system in 2022. The new program will streamline our system and save time, money and resources. The software was acquired with assistance from a grant from the Stackpole-Hall Foundation.

STRATEGIC PLAN LOOKS TO THE FUTURE The staff and Board of Directors worked with The Hill Group to develop a new strategic plan in 2022. *The Community Foundation of the Northern Alleghenies Strategic Initiative Areas and Goals 2023-2026* includes goals in the areas of Development and Donor Services, Community Leadership, Community Impact, and Organizational Strength. This strategic plan creates the building blocks that will lead our Foundation into a forward-focused vision with the goal to inspire philanthropy and achieve a thriving quality of life in McKean and Elk counties.

STATEMENT OF ACTIVITIES

COMMUNITY FOUNDATION OF THE NORTHERN ALLEGHENIES AS OF DECEMBER 31, 2022 AND 2021

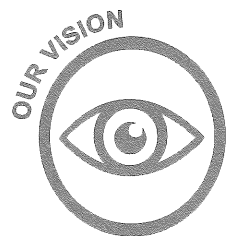
REVENUES	2022	2021
Contributions	\$ 2,888,797	\$ 1,948,296
Interest Income	318,977	305,001
Realized/Unrealized Gain (Loss)	(2,830,914)	1,434,741
Total Revenues	376,860	3,688,038
EXPENSES		
Grants and Scholarships	1,552,270	773,942
Other Program Expenses	70,781	73,414
Administrative	232,937	201,632
Fundraising	11,319	10,999
Total Expenses	1,867,307	1,059,987
CHANGE IN NET ASSETS	(1,490,447)	2,628,051
NET ASSETS, JANUARY 1	18,345,202	15,717,151
NET ASSETS, DECEMBER 31	\$ 16,854,755	\$ 18,345,202

MCKEAN AND ELK COUNTY AFFILIATES AS OF DECEMBER 31, 2022

REVENUES	McKean	Elk
Contributions	\$ 1,753,918	\$ 1,134,879
Interest Income	25,952	293,025
Realized/Unrealized Gain (Loss)	(215,323)	(2,615,591)
Total Revenues	1,564,547	(1,187,687)
EXPENSES		
Grants and Scholarships	428,809	1,123,461
Other Program Expenses	14,714	56,067
Administrative	26,890	206,047
Fundraising	2,015	9,304
Total Expenses	472,428	1,394,879
CHANGE IN NET ASSETS	1,092,119	(2,582,566)
NET ASSETS, JANUARY 1	1,258,898	17,086,304
NET ASSETS, DECEMBER 31	\$ 2,351,017	\$ 14,503,738



To strengthen our region through development, stewardship, and grant making as donors achieve their philanthropic goals



Connecting people who care with causes that matter



Our mission guides our efforts as we work with:

DONORS to help them support the particular issues and organizations they care about.

NONPROFITS to offer grant opportunities to assist in their work and projects.

STUDENTS as we administer scholarships that help them get the education they need.

MCCF FUNDS

Agency Endowment Funds

CASA of McKean County
Harvey Colubock Entrepreneurial Fund
Grow Rural PA Fund
McKean County Housing Fund
NPRC Presidents Fund
Tuna Valley Trail Association
WGC Endowment Fund

Designated Funds

Early Childhood Development Fund
Joe DeMott Port Allegany Community
Development Fund

Donor Advised Funds

Gentilman Peterson Fund
Harry J. Halloran Bradford Prosperity Fund
Butch & Peg Hannold Fund
Women's Giving Circle of McKean County

Unrestricted Funds

McKean County Community
Development Fund

Scholarship Funds

Garick S. Anderson Memorial Scholarship
Andrus Family Good Citizenship Award
ARG Employee Scholarship
BAHS & BCCHS Class of 1964 Scholarship
BAHS Class of 1960 Scholarship
Julianna Rose Barton Memorial
BCPAC Scholarship
Bradford Area Fire Dept. Scholarship ***
Kristie Chase Memorial Scholarship
Honey Lee Colella Education Scholarship
Chuck Daly Memorial
Martha A. Eddy Memorial Scholarship
Timothy S. Eyssen Memorial Scholarship
JoAnn Feceks Memorial Scholarship sponsored
by the Catholic Daughters of the Americas
Bernard Feiro Golf Memorial Scholarship
Thomas E. Frair Scholarship
Gentilman Family Scholarship
Gigliotti-Plano Student Support ***
Jerry & Nancy Haberberger Memorial Scholarship
Hannold Family Memorial Scholarship
Samuel F. Heffner Sr. Memorial Scholarship
Scott M. Hickey Memorial Scholarship
June Howard Scholarship
Diana J Hulings Memorial

Ellen Marie Hulings Nursing Scholarship
John and Donna M. Hulings Memorial
Steven Jerman Memorial
Jeff & Shelli Johnson Memorial
Kane Day School Scholarship
Sashy & Gladys Kane Perpetual
Peyton Kirk Memorial Scholarship
Pink Langainese Memorial Scholarship
Gary Meckley Scholarship
Mary Mottey Memorial Scholarship
Helene Nawrocki Memorial
Lisa Pecora Scholarship
Rotary Pass Through Scholarship ***
Tristan Sauers Memorial
Carrie Sauers Memorial
Elzear Kalstrom Schoch English Schol.
Rodney Schoch Band Scholarship
Pastor Craig Smith Memorial
Joe Stanko Memorial Scholarship
Susan Swanson Memorial Internship/
Scholarship sponsored by AHUG
Ernest C. Tanner Memorial Scholarship
Joe Tantalio Scholarship
Andrew Taylor Recognition Award
Verna Wooditch Memorial Scholarship

- Funds listed in **bold print** indicate a new fund created in 2022. - Funds marked with three asterisks (***) indicate a pass-thru fund. -

NEW FUNDS



HARRY J. HALLORAN BRADFORD PROSPERITY FUND

A grant from Halloran Philanthropies established the Harry Halloran Bradford Prosperity Fund (HHBPF) to be held at the McKean County Community Foundation. The fund was established to honor the memory of Harry J. Halloran, American Refining Group Inc. (ARG) Chief Executive Officer and Board Chairman, who was a dedicated philanthropist. Mr. Halloran supported ARG employees' involvement in their community and supported the local organizations they held in high regard.

The Harry Halloran Bradford Prosperity Fund will provide charitable funds to those non-profit organizations recommended by the local designated advisors. The Fund is

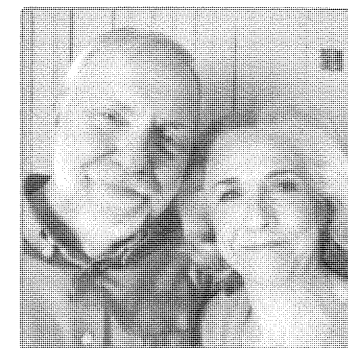
dedicated to continuing Halloran Philanthropies' localized approach in which charitable entities base grant making and investing on community interest while also providing communities with access to a broader network of resources. The HHBPF serves two purposes: to establish a participatory grant making advisory board comprised of members of the Bradford community, and to provide long-term stability to the nonprofit and support organizations serving the most vulnerable members of the Bradford community.

The partnership between the HHBPF and the Community Foundation is taking an innovative approach as it actively engages members of the Bradford community with participatory practices that have traditionally not been available. The HHBPF is also innovative in that it is responding to the opportunities and challenges facing the Bradford community with the flexibility to match their needs in unforeseeable circumstances.



NPRC PRESIDENTS FUND

The Northern Pennsylvania Regional College (NPRC) provides affordable and accessible post-secondary education to the residents of northern Pennsylvania by offering associate degrees and certificates. NPRC and the Community Foundation of the Northern Alleghenies (CFNA) entered into a new partnership in 2022 to administer scholarships and other endowments, made possible by a generous gift from an anonymous donor. This new partnership will offer additional educational opportunities to area residents.



GENTILMAN PETERSON FUND

This fund was started in 2022 by Jim and Ruth Gentilman Peterson in celebration of their 25th wedding anniversary and in support of continuing the revitalization of their hometown of Kane. The fund is intended to kickstart/match grants to local nonprofits, primarily via Kane Area Revitalization Enterprise (KARE), in support of planned or ongoing efforts or of newly planned initiatives to extend revitalization into surrounding neighborhoods.

Jim and Ruth were born and raised in Kane. Ruth left their hometown after graduation and returned 30 years later to marry Jim after the two met by chance at her mother's

80th birthday celebration in Kane. She was a member of the original KARE group in the late 1990's. Before retiring, she was the planning and communications manager at Kane Community Hospital (UPMC Kane) for 12 years. Jim worked in maintenance and vehicle fleet management at Abraxas, a youth residential substance abuse treatment facility in Marienville, for nearly 40 years. After retiring and for the last five years, Jim and Ruth razed, preserved, renovated and landscaped family-owned residential properties to help enhance their neighborhood, which is a block away from uptown Kane's major revitalization.



Growing.
Expanding.
Advancing.

Penn Highlands Elk has a long history of providing quality care to the region. The hospital campus is located in St. Marys, with outpatient services and physician offices in multiple locations throughout the region. It proudly serves the residents of Elk, Cameron and McKean counties.

Today, Penn Highlands Elk is part of a growing healthcare system that provides exceptional care for every age and stage in life – from pregnancy and birth to senior care and hospice.

www.phhealthcare.org/elk



**Penn Highlands
Elk**
Advanced Medicine. Here.

NEW PARTNERSHIP

MCCF AND MCKEAN COUNTY COMMISSIONERS PARTNERSHIP GIVES LIFE TO MANY COMMUNITY PROJECTS



Forty McKean County organizations benefited from the MCCF / McKean County Commissioners Partnership grants.

Partnership infuses \$250,000 in grants into our communities

During 2022, the McKean County Community Foundation was excited to work with the McKean County Board of Commissioners, who announced an exclusive partnership to benefit nonprofit organizations serving McKean County.

Many dedicated nonprofits that enhance the daily living experiences of all residents in the region were overlooked for funding amid the COVID-19 pandemic. To help these organizations, the McKean County Commissioners provided funds of \$250,000 to the McKean County Community Foundation for grant distributions in 2022. These dollars represented a portion of funds from the McKean County's American Rescue Plan Act (ARPA).

The Commissioners called upon the McKean County Community Foundation to utilize its expertise in the administration of the grant funding. The grants were open to nonprofit agencies, including any 501(c)3 nonprofits that serve the residents of the county and faith-based organizations that provide community services. The McKean County Community Foundation provided the administrative and management services for the application process, administration, and distribution of the grants.

The grants offered more opportunities for our local nonprofits and faith-based organizations to support their programs and projects that meet the needs of the community. Through the MCCF/Commissioners partnership, 40 organizations received grants for projects and programs that enhanced the quality of life for many residents of McKean County.

MCCF/McKean County Commissioners Partnership grants awarded a total of \$250,000 to these recipients:

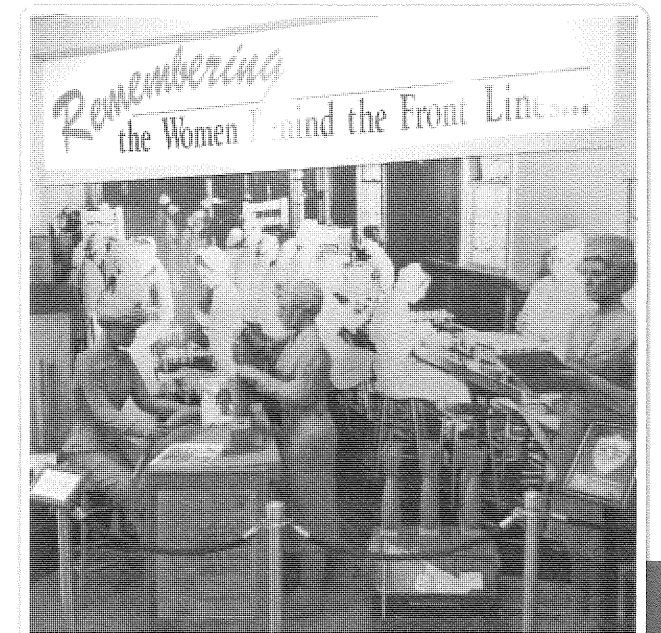
Alcohol & Drug Abuse Services
Beacon Light Behavioral Health System
Bradford Area Public Library
Bradford Ecumenical Home
Bradford Landmark Society
Bradford Little League
Bradford Little Theatre
Bradford Youth Trap
Camp JJ Inc. Avenna Health Care
CARE for Children
CASA of McKean County
Catholic Charities
Destinations of McKean
Duke Center United Methodist Church
Evergreen Elms
First United Methodist Church of Kane
Friends of the Library
Futures Rehabilitation Center
Hamlin Memorial Library
Hannah Catherin Wolfe Memorial
Kane Area Radio Association
Kane Area Community Center
Kane Community Preschool
Kane Little League
Kane Volunteer Fire Department
Lutheran Home of Kane
Meals on Wheels BHF
McKean County Community Foundation
MJ2KB Trail
Mt Jewett Hilltop Heritage
Open Arms
Penn Brad Historical Oil Well
Salvation Army Bradford Corp
Smethport Mt Jewett LL
SW Smith Library
Tuna Valley Trails Association
Twin Tiers Disc Golf Association
Willow Creek Snowmobile Club
WWII Museum
YMCA
YWCA

GRANT TO ELDRED WWII MUSEUM FOCUSED ON WOMEN IN WWII

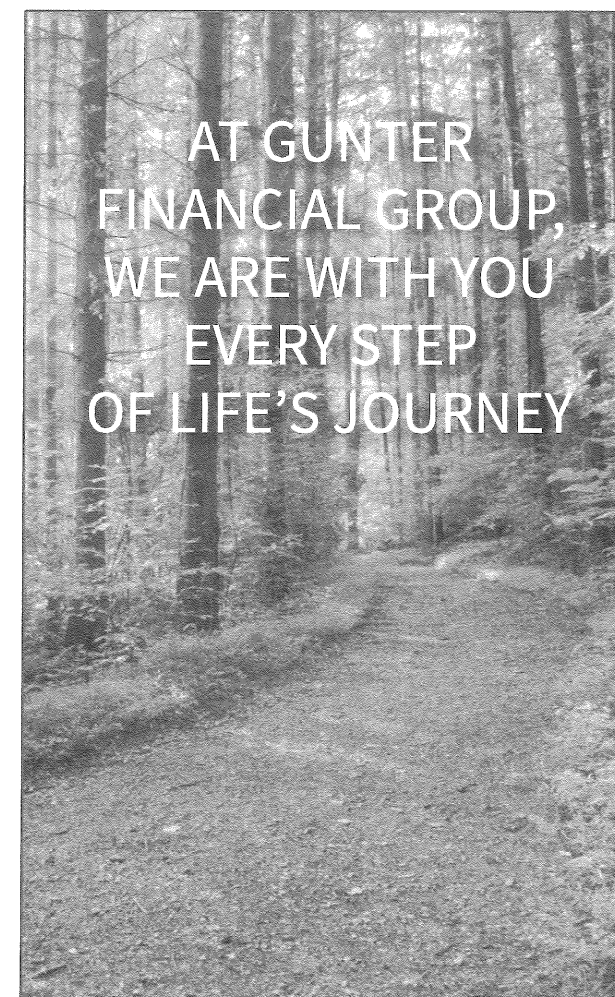
A \$10,000 grant to the Eldred WWII Museum as a result of the McKean County Commissioners/MCCF Partnership has kept the museum staff busy. The grant has helped them design and build new displays as well as update current displays into "Heritage Exhibits". These exhibits include educational handouts explaining the founding of the museum and strongly feature the women who worked the munitions plant assembly lines and their global impact on the outcome of the WWII. The heritage exhibits will help enhance their current educational programming, which is designed to inspire young people through experiencing and hearing the voices of our past.

The Eldred WWII Museum opened on Memorial Day 1996 with the mission to preserve and interpret the history of World War II and to commemorate the contribution of 40 million Americans that supported the 16 million fighting soldiers during the epic struggle to defend freedom and democracy against the forces of greed and aggression.

The museum has expanded from its one room beginning to 1,500 square feet of exhibit space on three levels over the past 26 years. Programming includes educational group tours, monthly programs, author book signings, WWII veteran and Holocaust survivor talks, and Holocaust education. The Eldred WWII Museum hopes to help shape a stronger future for the United States by helping present and future generations understand the lessons of the 20th century.

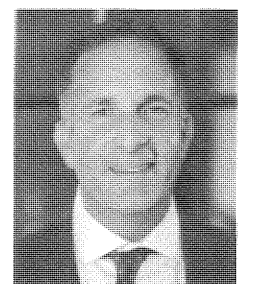


Pictured is the front entrance display at the Eldred WWII Museum honoring women who served behind the front lines.



DAVID J. GUNTER

Senior Vice President, Investments
david.gunter@raymondjames.com



STEPHEN UZONYI

Senior Vice President, Investments
Financial Advisor
steve.uzonyi@raymondjames.com

2 East Second Street // Oil City, PA 16301
255 South Street // Ridgway, PA 15853
814.493.8120 // gunterfinancial.com

GUNTER
FINANCIAL GROUP OF
RAYMOND JAMES®

© 2023 Raymond James & Associates, Inc., member New York Stock Exchange/SIPC.
23-BR3JJ-0022 TA 5/23

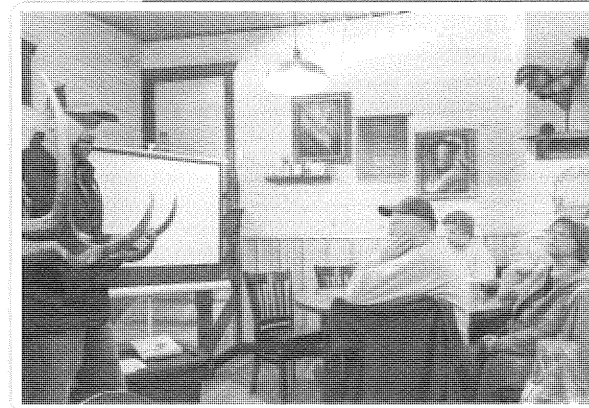
2022 GRANTS AWARDED

DESIGNATED FUNDS

A designated fund allows you to name a particular charity or charities, or field of interest to benefit from your fund in perpetuity. The Foundation provides oversight to ensure that the gift is used exactly as you intended. Finally, you have the assurance that, should the designated charity cease to exist, the Foundation's Board of Directors will preserve your intent by redirecting the fund toward the closest similar use.

\$42,799
WAS AWARDED
TO THESE
ORGANIZATIONS:

ABC Grow With Me
Grow Rural PA
NPRC
Port Allegany Borough Recreation
S.W. Smith Memorial Library



The S.W. Smith Library received a grant from the Joe DeMott Port Allegany Community Development Fund for their Senior Lunch & Learn educational programs.



A grant to CASA of McKean County assisted the agency in training community volunteers to advocate for the best interests of abused and neglected children in the foster care system in McKean County. The CASA volunteers compile their findings in a court report that is given to the presiding judge of the case. In the photo, trained volunteers are being officially sworn in.

DONOR-ADVISED FUNDS

Donors who want to be actively involved with their philanthropy may make grant recommendations to the Board of Directors which retains final responsibility for all distributions.

\$107,300 WAS AWARDED
TO THESE ORGANIZATIONS:

- Bradford Public Library
- CARE for Children
- CASA of McKean County
- Catholic Charities Counseling and Adoption Services
- Destinations
- Duke Center United Methodist Church
- Destinations - Bradford
- MCCF Administrative Fund
- NPRC Lisa Pecora Scholarship Fund
- YWCA Bradford

\$150,099

**TOTAL DOLLARS
AWARDED**

Today's a great day
to make our
community a
greater place.



PNC is proud to support the work of the Community Foundation of the Northern Alleghenies. Thank you for all you do to make our region stronger.

pnc.com/today

©2022 The PNC Financial Services Group, Inc. All rights reserved. PNC Bank, National Association. Member FDIC. COMM-FINIS-0709



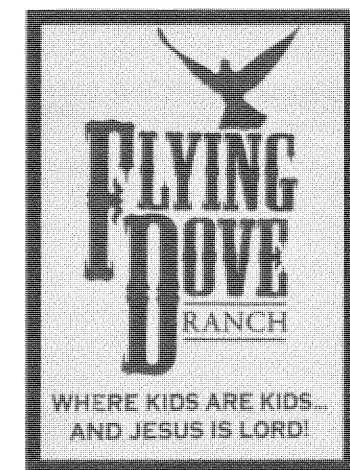
MEYER WAGNER BROWN & KRAUS LAW OFFICES

Serving the Elk County Area since 1972



- Estate Planning
- Deed and Mortgage Transactions
- Long-Term Care Planning
- Wills and Trusts
- Powers of Attorney

115 Lafayette Street | St. Marys, PA 15857
(814) 781-3445 | www.mwbklaw.com
info@mwbklaw.com



WHERE KIDS ARE KIDS...
AND JESUS IS LORD!



PAVILION



CABINS



BUNKHOUSE

Old Red Mill Dam Road
Ridgway, PA 15853
Phone: 814.594.1598 | Fax: 814.772.9241
Email: flyingdoveranch@gmail.com
[Like us on Facebook!](#)

Flying Dove Ranch is a non-denominational Christian camp and non-profit organization that provides individuals and organizations across the region opportunities at recreation and a place to strengthen personal relationships with the Lord and each other.

Property is available to rent for retreats, youth groups, conferences, business meetings, family outings, reunions, weddings and a variety of other community events.

NEW SCHOLARSHIPS

HONEY LEE COLELLA EDUCATION SCHOLARSHIP FUND

The family of Honey Lee Colella, who had been a long-time first grade teacher in the Bradford Area School District (BASD), recently transferred this longtime scholarship honoring Honey from the BASD to the Foundation. "She touched the lives of so many families in the Bradford area that we thought it would be a great honor for her to keep giving," said Ann Fesenmyer, Colella's daughter and a teacher in the school district. This scholarship will be awarded annually to a graduating senior pursuing a degree in elementary education, early childhood education, or special education.

THOMAS E. FRAIR SCHOLARSHIP FUND

Thomas Frair is a graduate of Penn State University with a B.S. in Forest Science and a M.S. in Forest Resources. He had a 38-year career as a private forestry consultant working primarily with private landowners in achieving short- and long-term forest management objectives. Tom is a lifelong resident of McKean County and the owner/operator of the Frair Haus Greenhaus & Gardens since 1995. Tom established this fund to help aspiring students in the fields of interest that he has had for his entire life: forestry, horticulture, apiculture, plant science and general agriculture.

GENTILMAN FAMILY SCHOLARSHIP FUND

This award began with the children of Victor and Elinor Cairns Gentilman as a celebration of their parents on their 50th wedding anniversary in 1996. Donations by the family, friends and employer matches helped grow the fund (formerly held at the Kane Area School District) over many years. The fund will support two scholarships: the "In the Game" scholarship, which is to be awarded to a Kane student pursuing a degree in health, physical education, or education, and the "STEM" scholarship for a student who will major in the field of science, engineering, math, or education. Vic and Elinor both served in WWII, then met at and received bachelor's and master's degrees from Penn State University. Both taught physical education. Vic was a teacher and coach in the Kane Area School District for 36 years. Before their marriage, Elinor taught for six years in State College and then was a substitute teacher in Kane. They raised three children, Rick, Ruth and Bill, all proud Kane High School graduates.

JUNE HOWARD SCHOLARSHIP FUND

The June A. Howard Memorial Scholarship fund was originally established on behalf of the Graduation Class of 1943 of the Arnot Ogden Memorial Hospital School of Nursing in Elmira, New York. The funds were then held at the Bradford Area School District and then transferred to the McKean County Community Foundation. This memorial award is in honor of June A. Howard who was a school nurse in the Bradford Area School District. A scholarship will be awarded to a BAHS graduating senior who is pursuing a nursing career.

HELENE K. NAWROCKI MEMORIAL SCHOLARSHIP FUND

Helene Nawrocki was born and raised in the Philadelphia, PA region. She earned bachelor's and master's degrees in nursing from LaSalle University. Helene was employed in the ICU and as Director of Nursing at Delaware Valley Hospital. She also authored the Nurse's Book of Courage and lectured at nursing seminars throughout the country. In 1996, after 20 years in the medical field, Helene and her husband moved to Potter County where she served as the Executive Director of the Potter County Education Council (PCEC). The PCEC's goal is to bring higher educational opportunities to the region. Helene never stopped learning, and this scholarship is being offered for today's students to continue their education through the Northern PA Regional College.

LISA PECORA SCHOLARSHIP FUND

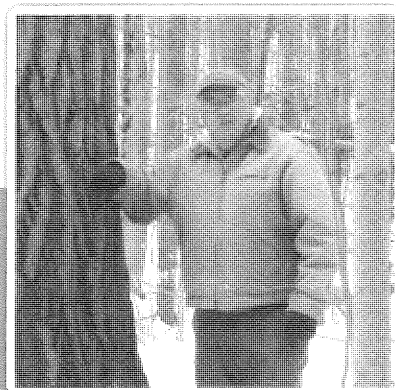
This scholarship fund honors Lisa Pecora's dedication to the Education Consortium of the Upper Allegany (ECUA) and Northern Pennsylvania Regional College (NPRC). Lisa Pecora is a founding member of the ECUA, serving as treasurer. ECUA and NPRC coordinated their efforts to create a College Plan that was approved by the Pennsylvania Department of Education. NPRC began operating as an independent institution in 2020 and offers degrees and certificates to area students. Lisa continues her dedication to the college's mission, currently serving as the Director of Human Resources. To receive a scholarship, a student must be enrolled or accepted to Northern PA Regional College (NPRC) and pursuing a post-secondary degree or be a high school student attending NPRC classes through dual enrollment. Preference is given to McKean County and Titusville High School students.

JOE TANTALO SCHOLARSHIP FUND

The Joseph C. Tantalo Scholarship, previously administered by Bradford Area High School, was transferred to the McKean County Community Foundation. The scholarship was established in Joe's memory by the maintenance and custodial staff of BAHS in collaboration with other employees to benefit future graduates who will be entering the building trades. Tantalo was a long-time, dedicated maintenance employee of the Bradford Area School District and was a master carpenter. He always had time to share his expertise with the students.



HONEY LEE COLELLA



THOMAS E. FRAIR



VICTOR & ELINOR CAIRNS GENTILMAN



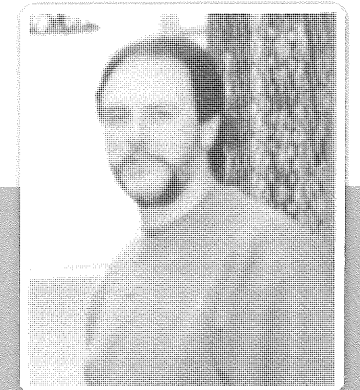
JUNE HOWARD



HELENE K. NAWROCKI



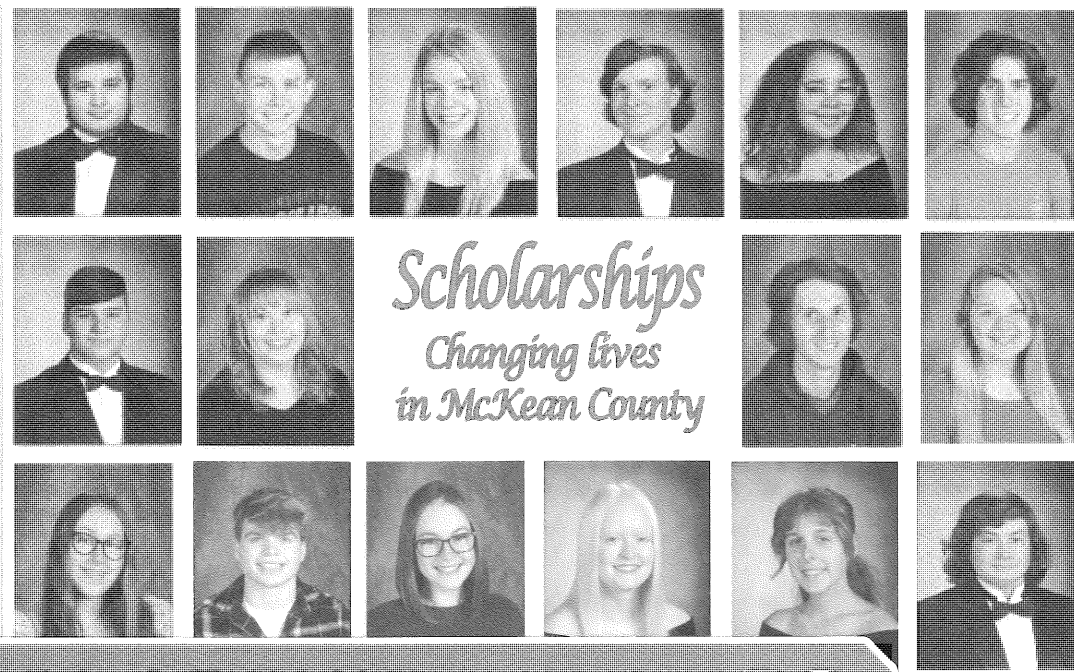
LISA PECORA



JOE TANTALO

**The McKean County
Community Foundation
awarded over
60 scholarships to
area students in 2022.**

**These students represent
some of the many
graduating seniors who
received a scholarship.**



2022 SCHOLARSHIP WINNERS

ARG Employee Scholarship

Jonathon Mishic (KAHS - \$500)
Justin Mishic (KAHS - \$500)

**Garrick S. Anderson
Memorial Scholarship**

Evan Smith (BAHS - \$500)

**Andrus Family Good
Citizenship Award**

Khadijah Thomas (BAHS - \$1,000)

**Julianna Rose Barton
Memorial Scholarship**

Liam McKay (BAHS - \$1,000)

BAHS Class of 1960 Scholarship

Madeline Emerson (BAHS - \$1,000)

**BAHS & BCCHS Class of 1964
Scholarship**

Lauren Schlopy (BAHS - \$1,000)

**Bradford Area Fire
Department Scholarship**

Olivia Angell (BAHS - \$1,000)

**Bradford Creative Performing Arts
Center BCPAC Scholarship**

Reagan Hutton (PAHS - \$1,000)

**Bradford Rotary
Vocational Scholarship**

Devan Poe (BAHS - \$500)

**Kristie Chase
Memorial Scholarship**

Kaylee Rhinehart (OEHS - \$500)

**Cinderella's Closet of Kane
Scholarship**

Jenny Crowley (KAHS - \$1,000)
Abigail Nuzzo (BAHS - \$1,000)
Kaylee Rhinehart (OEHS - \$1,000)
Madison Kottwitz (PAHS - \$1,000)
Hayley Durphy (SAHS - \$1,000)

Chuck Daly Memorial Scholarship

Joshua Greville (KAHS - \$1,000)
Sadie Walter (KAHS - \$1,000)

Kane Day Memorial Scholarship

Sadie Walter (KAHS - \$500)

**Martha A. Eddy Memorial
Scholarship**

Reece Norcross (BAHS - \$500)

**Timothy S. Eyssen Memorial
Scholarship**

Tripp Hoover (BAHS - \$450)

**Hannold Family Memorial
Scholarship**

Jack Bell (KAHS - \$500)
Kaylee Walker (KAHS - \$1,000)

**Joanna C. Fecsek Memorial
Scholarship (Kane CD of A)**

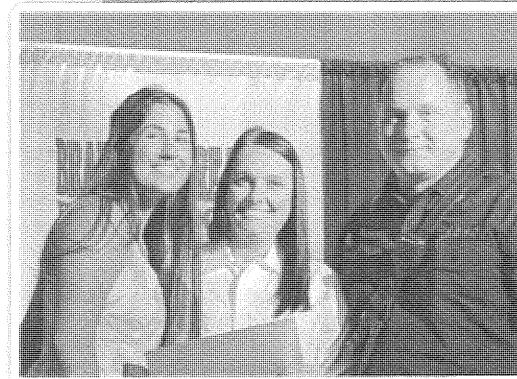
Sadie Walter (KAHS - \$350)

Bernard Feiro Memorial Scholarship

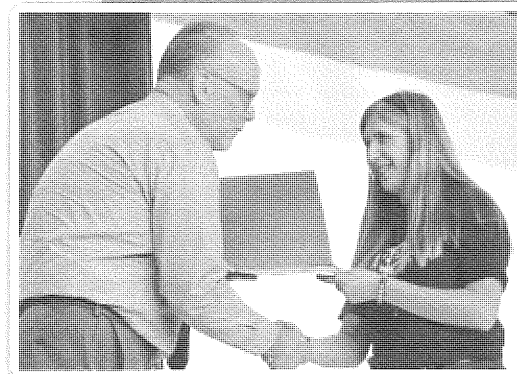
Spencer Cornelius (BAHS - \$500)

Thomas E. Frair Scholarship

Ian Dynda (PAHS - \$500)
Samantha Hulings (KAHS - \$500)



MCCF was pleased to award the \$1,000 Bradford Area Fire Departments Scholarship to Olivia Angell, graduating senior at BAHS. The award was presented by representatives of the fire departments, Steph Schivo and Greg Lewis.



Reagan Hutton, Bradford Area High School graduating senior, received the Bradford Creative Performing Arts Center (BCPAC) Scholarship for \$1,000. Darren Litz, Executive Director of BCPAC, presented the scholarship to Ms. Hutton.

Gentilman Family "In the Game" Award

Abigail Anderson (KAHS - \$4,000)

Gentilman Family "STEM" Award

Jonathan Mishic (KAHS - \$4,000)

**Jerry and Nancy Haberberger
Memorial Scholarship**

Avery Bechakas (KAHS - \$500)

**Samuel F. Heffner Sr. Memorial
Scholarship**

Christian Peterson (BAHS - \$950)

Scott M. Hickey Memorial Scholarship

Harley Morris (KAHS - \$500)

Diana J. Hulings Memorial Scholarship

Joshua Stewart (KAHS - \$675)

**Ellen Marie Hulings Memorial
Nursing Scholarship**

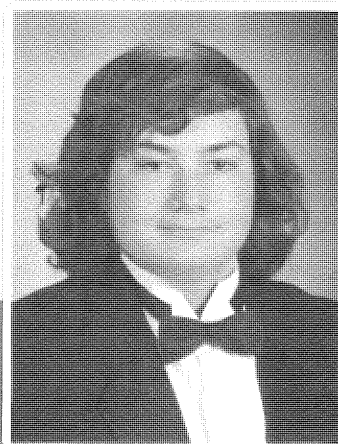
Joshua Stewart (KAHS - \$500)

**John and Donna Hulings
Memorial Scholarship**

Samantha Hulings (KAHS - \$650)
Sadie Walter (KAHS - \$650)

Steve Jerman Memorial Scholarship

Joshua Stewart (KAHS - \$1,125)



PARKER YOHE, BAHS

Rodney Schoch Band Scholarship

"Thank you for considering me worthy of this scholarship! I am a proud alumni of the Bradford Marching Owls, Jazz Band, Pep Band, and Concert Band. Being captain of the drum line and playing the quints for three of four years has been a joy. I hope to play in pep band at college."

**The Jeff and Shelli Johnson
Memorial Scholarship**

Jacob Costanzo (KAHS - \$500)

**Sashy and Gladys Kane
Perpetual Scholarship**

Mason Milliron (KAHS - \$1,000)
Sadie Walter (KAHS - \$1,000)

Peyton Kirk Memorial Scholarship

Madeline Emerson (BAHS - \$700)
Calyb Geist (BAHS - \$700)
Reece Norcross (BAHS - \$700)
Darian Wineberg (BAHS - \$700)

Pink Langianese Memorial Scholarship

Lauren Schlopy (BAHS - \$500)

Gary Meckley Scholarship

Jack Bell (KAHS - \$1,000)
Joshua Greville (KAHS - \$1,000)

Mary Mottey Memorial Scholarship

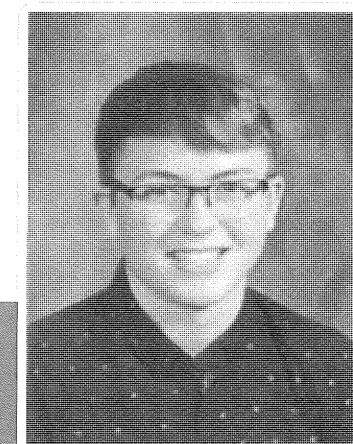
Lauren Placer (BAHS - \$1,775)

**Gigliotti - Plano Student
Support Scholarship**

Khadijah Thomas (BAHS - \$500)

**Paul Robert and Frieda Roberta
Calkins Rolfe Scholarship**

Madison Stahli (KAHS - \$4,000)



JOSHUA M. STEWART, KAHS

Diana J. Hulings Memorial Scholarship

"I am exceptionally honored to be the recipient of your scholarship. I plan to pursue a nursing career at Duquesne University. As I stated in my scholarship application, my goals from a young age volunteering my time to see the greater good was always on my 'to-do' list. I enjoy taking time out of each day to make a positive impact and end each moment fulfilled. Becoming a nurse will bring me this fulfillment and aid in my future success. Because of your generosity, the financial burden placed on me to pursue my education will be reduced. Thank you!"

Carrie Sauers Memorial Scholarship

Abigail Anderson (KAHS - \$500)

Tristan Sauers Memorial Scholarship

Mason Milliron (KAHS - \$575)

Elzear Kalstrom Schoch English Award

Mary Bukowski (BAHS - \$450)

Rodney Schoch Band Scholarship

Parker Yohe (BAHS - \$450)

Pastor Craig Smith Memorial Scholarship

Serrena Conklin (KAHS - \$700)

Joe Stanko Memorial Scholarship

Andrew Jekielek (KAHS - \$1,000)

Andrew Taylor Recognition Award

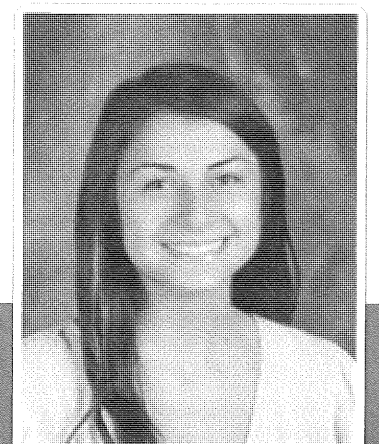
Dakota Baker (BAHS - \$400)
Lanie Allen (BAHS - \$400)
Gage Kremer (BAHS - \$400)

Verna Wooditch Memorial Scholarship

Jonathon Mishic (KAHS - \$500)

Scholarships Not Given This Year

Ernest Tanner Memorial Scholarship



SERENA CONKLIN, KAHS

**Pastor Craig Smith
Memorial Scholarship**

"Thank you so very much for your monetary donation and faith in me as a secondary education student. Pastor Craig left such a remarkable impact during his life and I truly hope to do the same. It is such an honor to be awarded the scholarship in his memory. I am forever grateful for the opportunity to apply, as well as the gift I received. Thanks again and God bless."



MORE MONEY, LESS PROBLEMS

READ ON TO FIND OUT HOW THE COMMUNITY FOUNDATION'S INVOLVEMENT IN SEVERAL INITIATIVES ARE HELPING REDUCE THE FINANCIAL BURDEN OF COLLEGE EXPENSES.

NPRC & CFNA form partnership to administer new scholarship funds

The Northern Pennsylvania Regional College (NPRC) and the Community Foundation of the Northern Alleghenies (CFNA) entered into a new partnership in 2022 to administer scholarships and other endowments, made possible by a generous gift from an anonymous donor. This new partnership will offer additional educational opportunities to area residents.

CFNA affiliates, the McKean County Community Foundation (MCCF) and the Elk County Community Foundation (ECCF), will provide the administrative and investment management services to process, administer and award the NPRC scholarship dollars.

NPRC provides affordable and accessible post-secondary education to the residents of northern Pennsylvania by offering Associate degrees and certificates. Investments in scholarship programs by NPRC helps students stay in our communities while attending school, and hopefully remain here to continue working as they enter the workforce. For more information about NPRC please visit their website at regionalcollegepa.org.

These new NPRC scholarships administered by the Community Foundation are available to students across the NPRC footprint. CFNA and its affiliates look forward to helping NPRC grow their new scholarships and endowments.



Representatives of CFNA and NPRC met to coordinate their new partnership - from left: Paula Fritz Eddy, CFNA Executive Director; Susan Shelleck, NPRC President; Kate Brock, Chairperson - NPRC Board of Trustees; Duane Vicini, Trustee for NPRC; Bob Esch, CFNA Board President and Trustee for NPRC.

Attending by Zoom was Raymond Pringle, VP of Finance & Administration for NPRC.

State ban on scholarship displacement benefits local students

Never heard of scholarship displacement? You're not the only one. This practice oftentimes comes as a surprise to students, but has been common at many colleges and universities across the country. Award - or scholarship - displacement occurs when a student receives an outside or private scholarship, such as one from the Community Foundation, which then leads to a reduction in other forms of aid.

PACFA, the Pennsylvania Community Foundation Association, joined a statewide coalition of scholarship providers to initiate the call for elimination of scholarship displacement in 2018. Fortunately, on Friday July 8, 2022, Governor Tom Wolf signed into law HB1642, a sprawling public school system bill that includes a ban on scholarship displacement at public colleges and universities. The ban went into effect immediately and will positively affect scholarship awards for this academic year.

Our Community Foundation is a member of PACFA, with Paula Fritz Eddy, our Foundation's Executive Director, serving as a PACFA Board Member. She explains, "As a community foundation, our duty is to carry out our donors' intent. When we award a scholarship to a student on behalf of a donor, and the university then reduces that student's financial aid package it essentially eliminates the scholarship's benefit to the student and defeats our donor's purpose in awarding the scholarship. We were pleased to work with PACFA on behalf of our donors and our students to help influence the passage of this bill."

Students can double their scholarship dollars through McKean and Elk County Foundation's PATH Partnership

Our Foundation is proud to be a partner with the Pennsylvania Higher Education Assistance Agency (PHEAA) to provide additional funding sources for students pursuing post-secondary education. Through the PATH (Partnerships for Access to Higher Education) Program, qualifying students who already received a scholarship or grant from one of their PHEAA PATH partners may be eligible for additional grant money.

- In 2022, 56 students from McKean and Elk counties doubled their scholarship award dollars distributed by our Foundation by qualifying for the PATH program's matching dollars, receiving an additional total of over \$84,000.
- The Foundation's online Scholarship Program automatically enters eligible students into the PATH program.
- Since 2003, the PATH program has matched a total of \$1,015,805 of the Community Foundation scholarship dollars awarded to 930 scholarship recipients.

It pays our donors to establish a scholarship fund at the Community Foundation! Our PATH partnership can essentially double the dollars awarded to a student from your scholarship. For more information about establishing a scholarship fund to help students at any level achieve their educational goals contact the Foundation at 844-238-2289.

THE NEXT GENERATION

Let Northwest Trust Services help ensure your assets are protected — and your legacy is fulfilled.

Professional Investment Management
Estate Planning and Settlement Services
IRA Management
Irrevocable, Revocable and Charitable Trusts
Guardianship and Special Needs Trusts

Proud to support the Elk and McKean County Foundations!

Northwest.com

Northwest Bank, a subsidiary of Northwest Bancshares, Inc., has operating units that use the Northwest Bank name and/or services marks "Northwest Investment Services" and "Northwest Insurance Services" to provide investment and wealth management, insurance services and employee benefit plans. Trust, fiduciary and retirement services are offered through Northwest Bank's Trust Department.

Northwest Bank and its operating units do not guarantee the performance of any investment or insurance products. This material is meant to educate and not provide legal, tax, accounting or investment advice. This material does not constitute an offer or solicitation in any jurisdiction where or to any person to whom it would be unauthorized or unlawful to do so.

Investment and insurance products: (i) are not deposits or other obligations of, nor are they guaranteed by Northwest Bank or its operating units; (ii) are not insured by the Federal Deposit Insurance Corporation (FDIC) or any other agency of the United States or by Northwest Bank or its operating units; and (iii) are subject to investment risk, including the possible loss of value. Only deposit products offered by Northwest Bank are Member FDIC.



Northwest Bank
For what's next!



Photo: Waterfall in new addition at the Dam Inn

STEGER MASONRY, INC.

MASONRY RESTORATION

MORE MUD

**COMMERCIAL • RESIDENTIAL •
INDUSTRIAL
BRICK • BLOCK • STONE • CONCRETE**

193 Steger Road • P.O. Box 127 • Ridgway, PA 15853

Phone: (814) 772-7083 • Fax: (814) 772-9241

stegermasonry@yahoo.com

2022 DONORS AND TRIBUTES

ARG Employees Scholarship Fund
American Refining Group, Inc.
Proceeds from ARG Employee Golf
Tournament
Robert & Jerriann Frenz
Jeannine & Brett Shoenecker Family Fund

BAHS & BCCHS Class of 1964 Scholarship
Carol Campe
Kristie Johnson
Richard & Christine Mattison
John McCoy
Michael & Martha Nenno
Frank & Mary Margaret Rizzo
Carolyn Confer Sekerka
Dennis Shaw
John & Sue Shaw
Joseph & Margaret Shaw

Bradford Area Fire Departments Scholarship
Bradford Township Volunteer Fire Department
Corydon Township Volunteer Fire Department
Derrick City Volunteer Fire Department
Lewis Run Volunteer Fire Department
Rew Volunteer Fire Department

**Bradford Creative and Performing Arts Center
BCPAC Scholarship Fund**
Bradford Creative and Performing Arts Center

Bradford Rotary Scholarship
Bradford Rotary Club

Butch & Peg Hannold Donor Advised Fund
Peg Hannold

CASA of McKean County Endowment Fund
Carolyn Confer Sekerka

Early Childhood Development Fund
Judy Kuntz

**Ellen Marie Hulings Nursing
Scholarship Fund**
Rebecca Cardoni

**Garrick S. Anderson Memorial
Scholarship Fund**
Debra Beatty
Gary & Linda Demos
Haley Kasperski
Marsha McCracken
Allison Norton
Stacey Reinard
Pearl Stark

Gentilman Family Scholarship
Bill Gentilman
Rick Gentilman
James & Ruth Gentilman Peterson

Gentilman Peterson Donor Advised Fund
James & Ruth Gentilman Peterson

Gigliotti-Plano Student Support Scholarship
Stephen Plano

Grow Rural PA
Dr. Richard McDowell

Harry Halloran Bradford Prosperity Fund
Halloran Philanthropies

**Harvey L. Golubock Bradford Business
Competition Fund**
Dr. Richard McDowell

**Jerry & Nancy Haberberger Memorial
Scholarship Fund**
Karen Haberberger

Joe DeMott Community Development Fund
Darleen Abbey
Dorothy Anderson
Joel Anderson
J. Michael & Katherine Bayline

Scott & Kimberly Bowser
Tom & Michele Causer
Close's Lumber Co., Inc.
D. E. Errick Inc.
Mary & Duane Gregg
Kenneth & Charlene Gross
Ruth Johnson
Juniata Valley Bank
Daniel & Theresa Lane
Mary & Joe Lashway
Kelly Newton
P. C. Federal Credit Union
Port Allegany Area Economic
Development Corporation
Postlewait Logging Company
George & Susan Riley
Rotary Club of Port Allegany
Robert & Faith Raudenbush
Daniel & Christa Schott
Rick & Cyndee Smith
David & Nicole Stahlman
Daniel & Mary Stavisky
Beverly Stayer
The Inn on Maple Street Bed & Breakfast
Jo Ann Tyson

Joe Stanko Memorial Scholarship Fund
Anna Chubon
Clarence & Carolyn Holden
Leisha Rossi
Matthew Smith
Diane Stanko & Gerard Smith

Joe Tantalo Scholarship Fund
Bradford Area School District

Hannold Family Memorial Scholarship Fund
Butch and Peg Hannold

**Julianna Rose Barton Memorial
Scholarship Fund**
James & Roberta Carter
Robert & Kathy Stidd

June A. Howard Memorial Scholarship Fund
Bradford Area School District
Merck Foundation
Richard & Shari Williams

Lisa Pecora Scholarship Fund
Richard McDowell

Martha Eddy Memorial Scholarship Fund
Jeffery & Robin Bolte
Richard & Paula Eddy
Melissa Wright

Mary Mottey Memorial Scholarship Fund
Carolyn Confer Sekerka

McKean Administration Fee Fund
American Refining Group, Inc.
Marilyn Blackmore
Kessel Construction, Inc.
Gary & Paula Roggenbaum

McKean County Development Fund
Close's Lumber Company
Frederick Fesenmyer
Jim Evans & Lisa Fiorentino
Sarah Lonzi
Register Graphics, Inc.
Cynthia Smith

**Partnership Grants with the
Commissioners of McKean County Fund**
McKean County Commissioners

Pastor Craig Smith Memorial Scholarship
Thomas Geer
Hazel Hurst United Methodist Church
William & Patricia Keesler
Mt. Jewett - Hazelhurst Senior Citizens
Mount Jewett United Methodist Women

Peyton Kirk Memorial Scholarship Fund
Allegheny Bradford Corporation
Allegheny Bradford Corporation
Maintenance Department
American Refining Group, Inc.
Kirk & Wendy Bator
Barbara & Bill Black
Thomas Bromeley
Jeffery Bryant
Jim Butler
Bill Chapman
Dustin Chapman
Michelle Chapman
Erika Close
Leslie Cobb
Kate Colella
Diana & Larry Combs
Copy Connection
Terri Cook
Angelo & Michelle Costanzo
Doug Covert
Megan Covert
Helen DeFrank
Angela Erway
Ashley Eschrich
Joey Ford
Emma Fox
Kathleen Fox
Kevin & Judy Fox
Kim Fox & Marty Kearns
Timothy & Barb Fox
Staci Frantz
Sheri Frederick
John & Ann Gannon
Hunter Gray
Adam Guthrie
Patricia Hannon
Jessica Hervatin
Nate Higbie
Michael Hodgson
Ashley Jackson
Frank Johnson
Mariann Kahle
Jack Kellam
Justin Keller
Bator Kirk
Eric & Mindy Kirk
James & Janet Kirk
Kyle Kirk
Melissa Kirk
Michael Kirk
Laquietta Ladlee
Stephanie Lawawic
Bob Longnecker
David Longnecker
Phyllis & Bob Longnecker
Jada Luther
Shirley Madison
Michele Marshall
Richard Masson
Kelleigh McAlpine
Sue & Donald McAlpine
Scott & Michele McCann
Johnna McCullough
Mike McGee
Olivia McWilliams
Tammy Miller
Elizabeth Morgan
The Morris Family
Julianna Morris
Steven & Martha Morris
Katie Nichols
Nolan Norcross
Jason & Lori Nuzzo
Bridget & Jeff Pascarella
Jerry Pattison
Carol Pecora
Pembroke Foundation
Linda Peterson
Craig Petruney
John Rankin
John & Linda Robuck
Bruce Ross
Shannon Sanders

Ron Schultz
Brain Simmonds
Candy Smith
Gerald & Deborah Stover
Wayne Thomas
Kristen Tim
Sandy Tully
Chris Vickers
Lisa Webster
R.J. Webster
Susan Wentz
John & Krista Whitlow
Mr. & Mrs. Ryan Wight
Mary Ann Wilder
Jesse Williams
Thomas & Sandra Wilson
Mindy & Troy Winship
Mariah Winsor
Zach Woodel
Kathy Wright
Marissa Yohe
Yoga with Kathy
Judith & John Zelina

Pink Langianese Scholarship Fund
Alleghany Industrial Insulation Company
Berwick Babin
Blaisdell Foundation
Bradford Gun Club Event Proceeds
Karen Langianese
Jarrett Machine

**Sashy & Gladys Kane Perpetual
Scholarship Fund**
Thomas & Dorothy Kane

Susan Swanson Memorial Internship Fund
Michael McEntire
Mary Hosmer
Todd Huth
James & Cecile Selter

Thomas E. Frair Scholarship Fund
Thomas Friar

In Memory of Edward Lyons
Steve & Reda Giordano

In Memory of Barry J. "Mac" McQuillen
Steve & Reda Giordano

In Memory of Joseph Meyers
Richard & Nancy Drydan

In Memory of Brian O'Connell
Steve & Reda Giordano

In Memory of Karla Petrino
Steve & Reda Giordano

In Memory of Mary Ann Piscitelli
Steve & Reda Giordano

In Memory of Pat Raymonda
Steve & Reda Giordano

In Memory of Anthony L. "Tony" Reese
Steve & Reda Giordano

In Memory of Anna Royal
Steve & Reda Giordano

In Memory of John H. Schmidt
Steve & Reda Giordano

In Memory of Dino Vecellio
Steve & Reda Giordano

In Memory of Donald Walker
BAHS Class of 1964
Ann Deutschlander

**Garrick S. Anderson Memorial
Scholarship Fund**
In Memory of Garrick Anderson
Robert & Judy Kuntz
Pearl Stark

In Memory of Charlene Reinard
Pearl Stark

**Harvey L. Golubock Bradford
Business Competition Fund**
In Memory of Raymond McMahon
Sara Andrews
Dr. Richard McDowel
Mr. & Mrs. Donald Fredeen
Mr. & Mrs. John Satterwhite

**Jerry & Nancy Haberberger
Memorial Scholarship Fund**
In Memory of Martin J. Ambrose
Tom & Carol Niklaus

In Memory of Margaret French
Catholic Daughters of America
Court Callistus #66

In memory of Michael Greto
Joseph Wozneak

**Joe Stanko Memorial
Scholarship Fund**

In Memory of Stephen Stanko
Gerald & Julie Arbaugh
Gary & Pam Dick
Thomas & Sandra Kase
John & Elizabeth Marconi
Robert & Sheila Omecene
Gary & Christine Rossman
Lisa Smith
Bob & Cheri Vaughn
Susan Zook & Glen Wilson

**Julianna Rose Barton
Memorial Scholarship Fund**
In Memory of Julianna Rose Barton
Raymond Marrone

Kane Day School Alumni Scholarship

In Memory of Ira "Joe" Blair
Sterling & Anastasia Watts

In Memory of Richard Besecker
Sterling & Anastasia Watts

In Honor of June Launtz
Sterling & Anastasia Watts

Kristie Chase Memorial Scholarship
In Memory of Kristie Chase
Irvin & Sandra Chase

**Martha Eddy Memorial
Scholarship Fund**
In Memory of Mary Jo Kautz
Jeffery & Robin Bolte
Richard & Paula Eddy

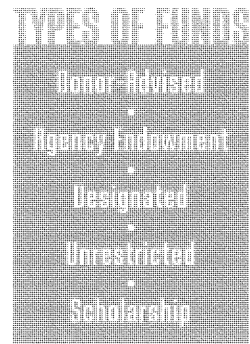
In Memory of Tammy Pattison & Carla
Zandi Shamblen
Jeffery & Robin Bolte

**Pastor Craig Smith Memorial
Scholarship**
In Memory of Pastor Craig Smith
Raymond & Sandra Myers

**Sashy & Gladys Kane Perpetual
Scholarship Fund**

In Memory of Tom Africa
Thomas & Dorothy Kane

**Susan Swanson Memorial
Internship Fund**
In Memory of Karen McClain
Edward Kocjancic
McKean County Community
Foundation
In Memory of Susan Swanson
John & Christy Darr



TOP 10 REASONS TO PARTNER WITH A COMMUNITY FOUNDATION

- 1. LEGACY In establishing a permanent endowment fund, you can help meet the pressing needs of today while building a source of support for the future. We invest your gift over time and use only a portion for grants and scholarships. That way, your gift — and all future earnings — are a perpetual source of community capital, helping do good work today and in the future. Grants and/or scholarships will continue to be made in the name of your fund, so that your legacy and your charitable wishes are preserved.
- 2. ADMINISTRATIVE AND ACCOUNTING SERVICES We handle all fund paperwork for donors including fund statements, check-writing, tax filings, annual financial audits, donor acknowledgements and tax receipts, and record-keeping.
- 3. INVESTMENT SERVICES Enjoy the advantages of having the fund you established be part of an actively managed, diversified investment portfolio. Our finance committee oversees the investment activities of the Foundation.
- 4. COST-EFFECTIVENESS The fund you establish will be pooled with other fund assets at the Community Foundation, offering significant economies of scale, which means lower investment fees, lower fund minimums, and lower administrative costs.
- 5. TAX BENEFITS As a public charity, we offer maximum tax advantage for most gifts according to federal law.
- 6. SCHOLARSHIP SERVICES Scholarship administration can be time-consuming and expensive. We offer incredible services for our scholarship funds, including the use of our online application, our outreach to local high schools, and our check-writing services. We can also handle the scholarship selection at no additional cost.

- 7. GRANT SELECTION If you wish to establish a grant-making fund but do not wish to review applications or select the awards, you can leave the grant-making to us. We will handle the application, due diligence process, proposal review, and grant disbursement, ensuring that your funds are supporting the most exciting projects, the most urgent community needs, and the best-run nonprofits in our community.
- 8. PHILANTHROPIC GUIDANCE If you wish to recommend grants yourself, you can establish a donor-advised fund and still take advantage of our staff's philanthropic counsel. Our staff has broad expertise regarding local nonprofits and community needs, and we can help you select the best nonprofits for your grant making.
- 9. PUBLICITY We are pleased to publicize new charitable funds in accordance with the wishes of our fund donors. All grants and scholarships awarded from your fund will be included in our annual report and on our website. We can also make extra publicity efforts to highlight special gifts to and grants from your fund. On the flip side, while some donors want to publicize their funds, others wish to remain anonymous, and we can do that, too. Just let us know your preferences.
- 10. AGENCY ENDOWMENT FUNDS We hold funds on behalf of more than 20 nonprofits in our community, and for good reason. Your organizational fund at the Community Foundation can provide your nonprofit with a reliable and easy source of income in perpetuity. You receive all the benefits described above. Additionally, any donor to the Community Foundation can designate gifts to your organization's fund.

DONORS:



OUR PARTNERS IN CHARITABLE GIVING

We invite you to join our many charitable donors who have established a fund at the Community Foundation. Creating a fund at the Foundation can benefit your favorite charities, causes, or communities now and in the future. It is an easy, flexible, and effective way to make a lasting impact on the community and fulfill your charitable goals.

Our Foundation manages more than 63 diverse charitable funds totaling almost \$2.3 million in assets. Although each fund has a unique name, history, legacy, and purpose, they all share the same broad goal of improving lives and meeting local needs in McKean County.

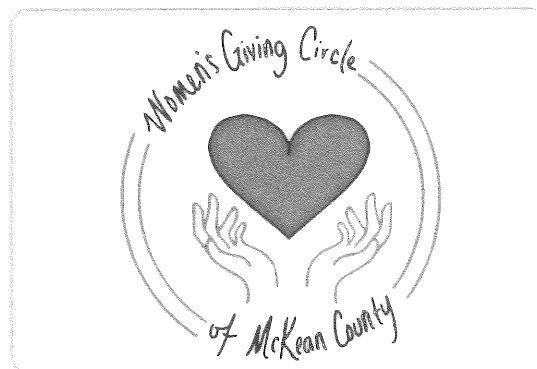
WOMEN'S GIVING CIRCLE

TOGETHER

WE SHARE | WE BUILD | WE GIVE

Empowering Women to Create Positive Change through Collective Giving in McKean County

WE SHARE -



WGC MEMBERS SHARE THEIR RESOURCES TO CREATE POSITIVE CHANGE

Women's Giving Circle (WGC) members are women from all walks of life who make their homes in McKean County. WGC is a relatively young organization that was formed to encourage the charitable giving of our area women.

An affordable membership offers the opportunity for community-minded women to make a huge difference with a small investment. A yearly donation of a minimum of \$100 gives a member voting privileges as well as participation in two yearly events with many amazing women in our communities.

WGC invites nonprofits to submit grant applications on an annual basis, with grants awarded at the annual meeting from the pooled donations of all of the WGC members. We extend an invitation to all area women to join us at any of their events to learn more about how the organization is making a difference in our community.

WE BUILD -



LOGYARD BREWING EVENT: HELPING TO GROW OUR GRANTING DOLLARS

WGC is both a philanthropic and a social organization that strengthens the concept of women working together to fund change and create a better way of living in their communities. WGC's 2022 social event held at the Logyard Brewing Taproom in Kane featured an enjoyable evening of friendship, appetizers, and floral design, while helping to grow the granting monies available for distribution at their annual meeting. Local florists guided the group in creating beautiful floral bouquets and succulent garden dishes.

Photo - Enjoying their floral designs are (in foreground) Krysta Robinson, Linda Myers, Julie Cleland, and Marilyn Blackmore.

WE GIVE -



GRANTS AWARDED AT 2022 ANNUAL MEETING

The Women's Giving Circle (WGC) fall business meeting was held at The Bradford Brew Station on November 16. Members and guests enjoyed hearty hors d'oeuvres and participated in basket raffles. The highlight of the evening was a presentation by each of the 10 grant applicants with a brief description of the project their grant would be funding. WGC members then voted on their favorite projects and awarded a total of \$7,300 in grants to five non-profit organizations.

Accepting grants from Women's Giving Circle on behalf of their organizations were Suzy Meyer-Page of CASA, Beth Rosier of Duke Center United Methodist Church, Vanessa Castano of YWCA, Mike Black of Destinations, and Denise Bean of The Guidance Center.

WHY JOIN

- Affordable charitable giving.
- Amazing women.
- Fun events.
- Building your community.

Membership is open to those who share our vision for a brighter McKean County for women and children. New members are invited to join our dynamic group at any time. Our membership fee is only a minimum of \$100 per year. Your membership fee will be pooled together with other members' fees; and the money we collect will be awarded via grants to organizations that meet our goal of improving the lives of women and children in our area. Your membership fee enables you to learn about nonprofits in our community, join like-minded women who want to make a difference in their community, welcome new members, and vote on who receives our pooled money. Women can learn more or join Women's Giving Circle by visiting the MCCF website at mckeancountyfoundation.org, or by calling the Foundation at 1-844-238-2289.

WOMEN'S GIVING CIRCLE?

WOMEN'S GIVING CIRCLE 2022 GRANT AWARDS

- \$2,000** To YWCA for their housing and employment services program
- \$2,000** To CASA of McKean County for recruitment and training of additional volunteers
- \$2,000** To Destinations of Bradford to expand their housing and gasoline card programs
- \$1,000** To Duke Center Methodist Church Food Pantry to supply personal care and hygiene products
- \$300** To Catholic Charities Counseling and Adoption Services for their Pregnancy and Parenting program

WOMEN'S GIVING CIRCLE MEMBERSHIP

- New 2022 members are listed in bold print. -

Jill Anderson	Carol Duffy	Virginia Hauser	Chris McNeil	Wanda Stebbins
Martha Baker	Sarah Duke	Megan Inghram	Linda Myers	Charlotte Stoughton
Marilyn Blackmore	Diane Dynda	Virginia Hauser	Nicole Myers	Roni Swanson
Judy Bodamer	Stephanie Eckstrom	Anita Housler	Cheryl Nasto	Regina Tkacik
Denise "Dee" Buchanan	Paula Fritz Eddy	Ricci Jeannerette	Nancy O'Day	JoAnn Tyson
Jeanette Burleson	Angela Erway	Marilyn Jests	Susie Ostrum	Lu (Patricia)
Vanessa Castano	Suzanne Erwin	Bonna Carlson-Johns	Ruth Gentilman	Vandermark
Lisa Esch	Lisa Esch	Lori Johnson	Peterson	Susan Wertz
Sally Claypool	Jennifer Fitton	Connie King	Krysta Robinson	Teresa Wilcox
Julie Cleland	Rev. Stacey Fussell	Linda Lake	Jeanne Satterwhite	Julie Young
Judith Cook	Jessica Gabriel	Lycinda (Cindy) Lasher	Brandy Schimp	Susan Zook Wilson
Sharon Daniels	Tanya Gayley	Mary Lashway	Anita Shuey	Suzy Zirkle
Christy Darr	Kathy Gibson	Jean Luciano	Cyndee Smith	
Katelyn Dellen	Mary Gregg	Marsha McCracken	Jennifer A. Smith	
	Karen Haberberger	Amy McCune	Nikki Stahlman	

DO YOU BELIEVE IN OUR CAUSE?

The Women's Giving Circle (WGC) is looking for a few community-minded women to join our committee. Our volunteers represent all walks of life. Give us your ideas, some of your time, and your organizing skills and we'll give YOU a rewarding experience while making an impact in your community!

This is not a typical volunteer opportunity! It does not involve weekly meetings, special training, or specific skills. WGC volunteers help plan a yearly membership event, organize our annual business meeting, and participate in some community outreach to help build our membership.

We welcome women of all ages to consider this special volunteer opportunity. We need your experience, your leadership, your creativity, and your passion for a better community. If you have an interest in helping us really make a difference right where you live, call Paula, our Executive Director, at 844-238-2289 for more information.



CONNECTING YOUR LIFE
AND FINANCES

630 Division Street
Suite 1, DuBois, PA 15801
www.JanneyDuBois.com
800.238.0067

Janney Montgomery Scott LLC
Member: NYSE, FINRA, SIPC
Ref: 1118305-0623



PO Box 708 | Bradford, PA 16701
PO Box 934 | St. Marys, PA 15857
Ph: 1-844-238-2289

mccf@mckeancountyfoundation.org
mckeancountyfoundation.org

ADDRESS SERVICE REQUESTED



Follow us on Facebook for the
most up-to-date news and info!

MISSION STATEMENT *The mission of the McKean County Community Foundation is to strengthen our region through development, stewardship, and grant making as donors achieve their philanthropic goals.*

VISION STATEMENT *The McKean County Community Foundation connects people who care with causes that matter.*

The official registration and financial information of the McKean County Community Foundation may be obtained from the Pennsylvania Department of State by calling toll-free, within Pennsylvania, 1-800-732-0999. Registration does not imply endorsement.

Non-Profit
Organization
US Postage
PAID
St. Marys, PA
Permit No. 3

WHAT IF YOU COULD SUPPORT ALL YOUR
FAVORITE CHARITIES —————> ONE?
THROUGH DONATION



THE POWER OF A DONOR-ADVISED FUND

In the process of establishing the Hannold Family Memorial Scholarship Fund at MCCF, Charles "Butch" Hannold passed away suddenly. After completing the scholarship fund process in 2022, Peg also established the *Butch & Peg Hannold Donor-Advised Fund* to continue to honor Butch and their shared interest in supporting their favorite charities. The Hannold's have awarded grants to:

National Baseball Hall of Fame Museum
Kane Area Radio Association
Kane Area Food Bank
Kane Volunteer Fire Department
Wounded Warriors
Veterans of Foreign Wars of US

THE HANNOLD'S DID IT... YOU CAN TOO!

Creating a donor-advised fund is easy when you partner with the Community Foundation. You establish and name your fund, start with a minimum of \$5,000, then at any time you can:

- Recommend grant distributions from your fund to any 501(c)(3) public charity located in the United States.
- Make additional tax-deductible contributions to your fund.
- You choose recognition or anonymity.

